

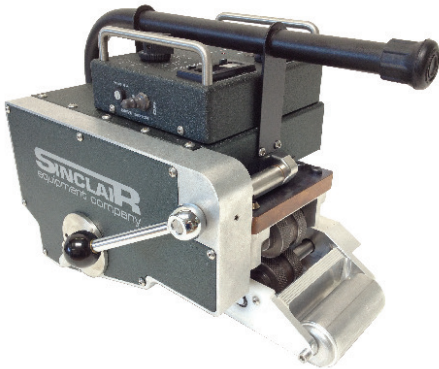
# Geosynthetic Welding

**SINCLAIR**  
equipment company



800.624.2408 • 530.626.9386 • 530.626.5144 Fax • [www.sineqco.com](http://www.sineqco.com) • [info@sineqco.com](mailto:info@sineqco.com)  
6686 Merchandise Way Diamond Springs, CA 95619

## Wedge-It Wedge Welder

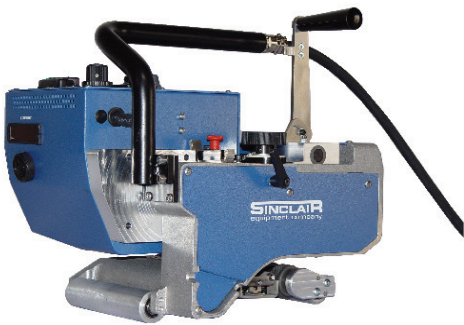


Since 1987 and well over 4,000 units sold, the 230V Wedge-It Wedge Welder is recognized as the leader for in-field welding. With a material thickness range of 40-120mil, the Wedge-It provides sealing of HDPE, LDPE, PE, RPP, XR5, and PVC

(with change to aluminum wedge). Rugged single frame design provides durability with drop out terrain rollers for easy cleaning. Copper Split Wedge is designed for "easy-out" removal of spent cartridge heaters for best on site change. The Wedge-It features a step pressure adjustment of nip rollers, single lever wedge engagement, large digital display of temperature/speed/input voltage/hour meter, and includes carry case.

**#CW2000B: Wedge-It Welder w/HDPE Case**

## Multi Wedge Welder



As a mid-range in-field welder, the 230V Multi provides great versatility and unique features. The Multi can be used with a wide variety of materials including HDPE, LDPE, PE, PVC RPP, and XR5 with thicknesses ranging from 20-

60mil. Rigid construction eliminates frame flex and the Multi has a brushless, high torque drive motor to propel upslope. Plus the Multi is 16 lbs. lighter than our Wedge-It model. Easy operation is found from the unique single-lever engagement of hot wedge and nip rollers that combine to start the welding process. Further, the wedge design includes a powerful ceramic heater with easy replacement; no drilling of expended cartridge heaters!

**#MW100: Multi Wedge Welder w/Case**

## Micro Wedge Welder



Light weight and easy to use, the Micro Wedge Welder is an excellent choice for your in-field thinner supported or unsupported material welding. The 1000W hot wedge can provide bonding for 15-40mil thick-

ness of various geotextiles, LLDPE, PP, PE, PVC, and RPP. The open style frame and retracted hot wedge allow for easy loading while large urethane rollers provide smooth rolling over various terrain. Available in 120v or 230V, operation controls include digital heat and analog speed control plus hour use meter.

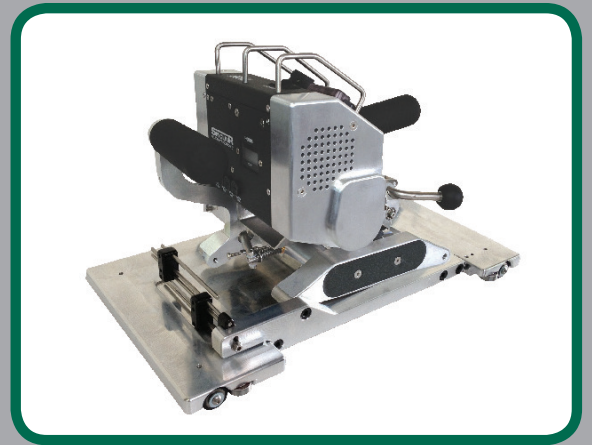
**#MM0100: Micro Wedge Welder 230V w/Case**

**#MM0100.1: Micro Wedge Welder 110V w/Case**

## Micro Base for In-House Fabrication

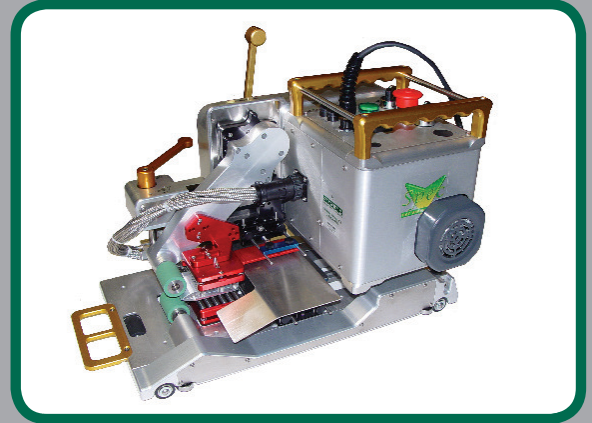
Bring your 15-40mil lighter weight, flexible liner fabrication in-house by adding the Base Assembly to your new or existing Micro Wedge Welder. This base support system for the Micro provides easy, self-propelled operation on a floor surface or in our modular Track Section (see page 8). The Micro's open style frame and retractable wedge make for simple loading while upper and lower material guides both at the weld area and in front of the machine assist to line up the material for a uniform seam size. Take full advantage of the Micro Wedge Welder's capability for both field and prefab work!

**#MM0115: Micro In-House Wheel Base Assembly**



## Spec High Speed Wedge Welder

Accomplish the greatest volume of in-house, pre-fabrication welding with the highly versatile 230V Spec High Speed Overlap Welder. Weld 10-45mil PE coated fabric, LLHDPE, RPP, PU, and PVC at up to 70' (21m) per minute! A choice of hot wedge sizes and power plus matching pre-heat roller provide a wide versatility to welding various materials and weights. Weld on either a floor or table top surface or in our modular Track Section (see pg 8) for easy material set-up and one person operation. Match lighter weight material with a 1000W, 2 roller pre-heat system or medium weight with a 1500W, 4 roller pre-heat system. For heavier materials, best production speeds can be accomplished with the 2000W, 6 roller pre-heat system.



- #SW72610: Spec High Speed Welder, 2 Roller Preheat, 25mm (1") Wedge, 220V**
- #SW72615: Spec High Speed Welder, 2 Roller Preheat, 40mm (1-1/2") Wedge, 220V**
- #SW72620: Spec High Speed Welder, 2 Roller Preheat, 50mm (2") Wedge, 220V**
- #SW72640: Spec High Speed Welder, 4 Roller Preheat, 25mm (1") Wedge, 220V**
- #SW72645: Spec High Speed Welder, 4 Roller Preheat, 40mm (1-1/2") Wedge, 220V**
- #SW72650: Spec High Speed Welder, 4 Roller Preheat, 50mm (2") Wedge, 220V**
- #SW72651: Spec High Speed Welder, 6 Roller Preheat, 25mm (1") Wedge, 220V**
- #SW72652: Spec High Speed Welder, 6 Roller Preheat, 40mm (1.5") Wedge, 220V**
- #SW72653: Spec High Speed Welder, 6 Roller Preheat, 50mm (2") Wedge, 220V**

## "Cool Grip" Hot Air Welding Gun w/40mm Tip

For all your hand-held welding needs. Features exclusive "Cool Grip" for a cooler handling of the tool and a heat shield to prevent accidental contact. Variable temperature control to 1300°F (700°C) and strong 400 l/min airflow.

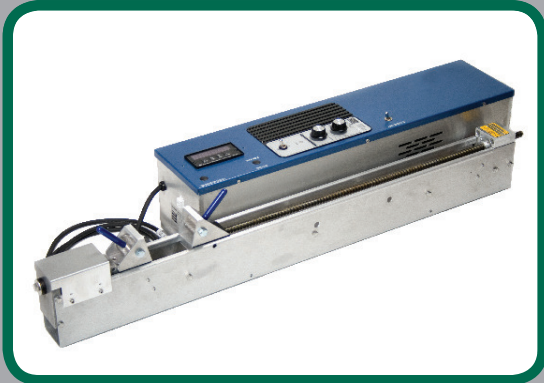
**#42-0153C: Cool Grip w/40mm Tip 110V , 1650W**  
*Various Nozzles & Silicone Roller Available.*  
*See Page 13 in Industrial Fabric Welding.*



**#11-600**  
**Geo Grip Geomembrane/  
 Liner Pulling Handle**



## TESTING EQUIPMENT



### *Accura-Lite Tensile Tester*

As the standard for over 25 years, the Accura-Lite Tensile Tester provides simplicity, accuracy, and dependability for reliable test results. Choose between cam type jaws or traditional lock down clamps. With the longest separation capacity (27"+) and pulling speeds up to 20"/min, the high torque motor can handle up to 500 lbs pulling power with a +/- 1% accuracy. The TEDS equipped load cell means easy re-calibration. The Accura-Lite includes speed and forward/reverse controls, limit override switch for safety, DPM-3 digital indicator, and heavy duty carry case. Order as either 120V or 230V.

**#AL0100.1: 110V Accuralite, #AL0100: 220V Accuralite**



### *Fusion Coupon Cutter*

Cut out coupons and pass them over to the Accura-Lite for testing. The Fusion will cut a coupon size of 1 x 6" and cut up to a thickness of 1/2".

**#F100: Fusion Coupon Cutter**



### *Manometer*

The Manometer features a stainless steel needle and a graduated gauge. It has a valve stem air fitting built in.

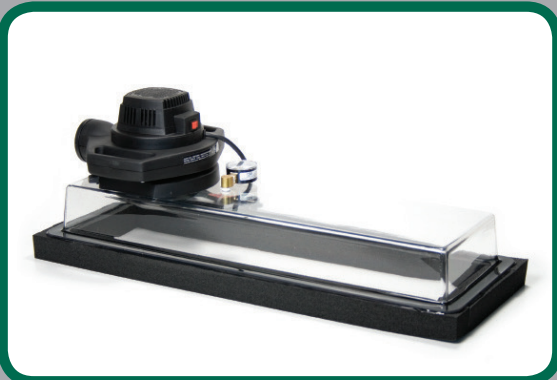
**#MS400: Manometer**



### *Spark Tester*

Small, lightweight and self-contained, our Spark Tester will throw an arc to a ground if small holes are detected.

**#MS602 : 110V Spark Tester  
#MS600: 220V Spark Tester**



### *Vacu-lite Vacuum Box (shown left)*

The Vacu-lite Vacuum Box offers a lightweight, high powered solution to your vacuum testing needs in a self-contained, 110V or 220V package. No exterior vacuum pump needed!

**#V100: 110V Vacu-lite, #V200: 220V Vacu-lite**

### *Hi Vac Vacuum Boxes (shown below)*

For those jobs that require higher vacuum test values, Sinclair offers the Hi Vac series of vacuum boxes. These vacuum boxes are built tough to withstand the higher pressures produced by external vacuum pumps. Includes: on/off valve, vacuum gauge, quick disconnect fitting and 25ft of compressor hose.

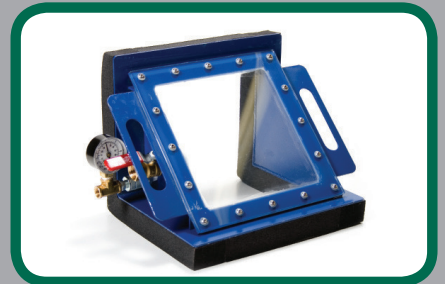
**#MSVPUMP.1 Vacuum Pump sold separately.**



***Hi-Vac 8" Vacuum Box***  
**#SV100**



***Hi-Vac 22" Vacuum Box***  
**#HV100**



***Hi-Vac 90° Vacuum Box***  
**#CV100**



## EXTRUSION WELDERS



***MAK58D Extrusion Welder***

#MAK58D: 230V w/D-Handle w/Case



***MAK48D Extrusion Welder***

#MAK48D: 230V w/D-Handle w/Case

For Geo-Liner extrusion weld sealing, the MAK 48D and MAK 58D are proven performers. For use with 4mm or 5mm PE and PP plastic rod, the MAK 58D has nearly a 13 lbs/hr output while the MAK 48D has nearly 11 lbs/hr output (using 5mm rod). Other unique features include 2300W brushless hot air pre-heater, 650W (MAK 48D) or 800W (MAK 58D) heat band for the barrel, powerful 9 amp drive motor, hardened gears, optional 360 degree swivel Teflon shoe, and 2 year warranty! Easy to use with extension handles, the MAK 48D measures nearly 22.5" in length and weights 16.5 lbs., while the MAK 58D measures 27.5" in length and weights 22.5 lbs.



***MAK32D Extrusion Welder***

#MAK32D: 230V w/D-Handle

#MAK32DC: 230V w/D-Handle w/Case

For best output to weight ratio in a versatile in-field extrusion welder, consider the new MAK 32D. With the ability to use up to a 5mm plastic rod, nearly 9 lbs of output can be found from the 15 lbs extruder measuring 23.6" in length. Further, the 2300W brushless pre-heater provides high air volume with quiet, low maintenance operation. The MAK 32D is perfect for quick repairs and unique sealing applications where high output and easy handling are required.



***Mini-X Extrusion Welder***

#MX100: 230V w/Case

#MX100.1: 110V w/Case

Get incredible extrusion welding performance from the award winning Mini-X. At only 7.5 lbs. and light enough to use with one hand, the Mini-X uses a 3mm rod to extrude a wide variety of thermoplastics at nearly 1.5 lbs/hr. A fully electronic controller provides digital speed, temperature, and material settings. The Mini-X has a powerful 2300W brushless pre-heater and 875W of heat to the barrel thoroughly mixes the thermoplastic rod. Pre-heat can be positioned for a bottom or side mounting and a variety of Teflon shoes are available.